



DRIVING THE CORE DEVELOPMENT OF IC DESIGN.

CO-CREATING AN EMERGING CROSS-DISCIPLINARY
SEMICONDUCTOR INNOVATION ECOSYSTEM.



↑ 往南港
NanKang IC Design
Incubation Center

▶ Southern Taiwan IC Design
Industry Promotion Hub



CONTACT US



NANGANG IC DESIGN INCUBATION CENTER

Tel: (02)2655-7155#320

Fax: (02)2655-7115

Address:

Room 910, 9th Floor, No. 3-2, Park Street, Nangang District, Taipei City

Managing Unit:

Electronic and Optoelectronic Systems Research Laboratories,
Industrial Technology Research Institute

E-mail: PeggyHuang@itri.org.tw



SOUTHERN TAIWAN IC DESIGN INDUSTRY PROMOTION HUB, INDUSTRIAL DEVELOPMENT ADMINISTRATION, MINISTRY OF ECONOMIC AFFAIRS

Tel: (07)338-4038

Fax: (07)970-0920

Address:

No. 11-1, Chenggong 2nd Road, Qianzhen District, Kaohsiung City

Managing Unit:

Southern Taiwan Industry Promotion Center (STIPC),
National Sun Yat-sen University

E-mail: pumpchicpdg@gmail.com

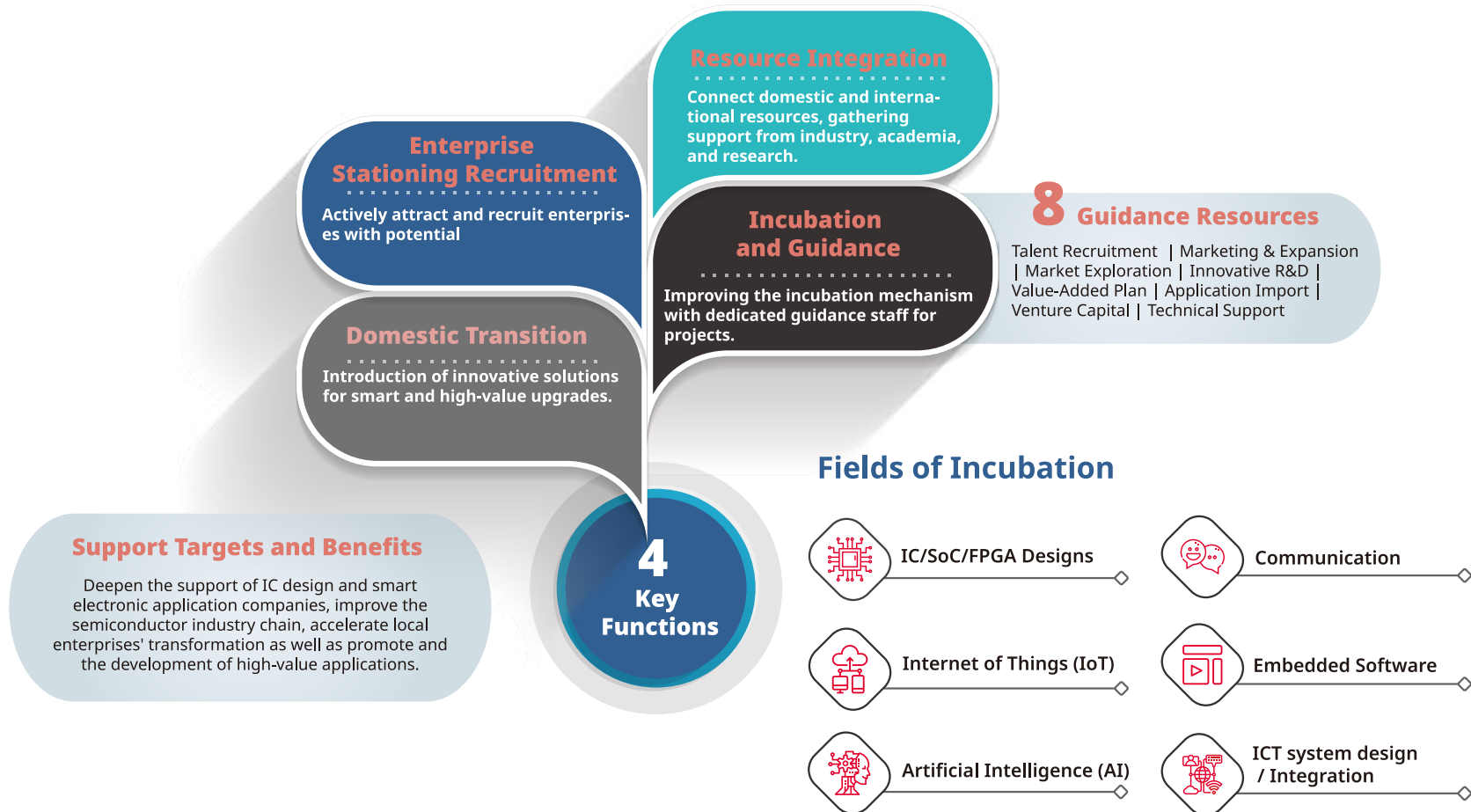


Industrial Development Administration
Ministry of Economic Affairs

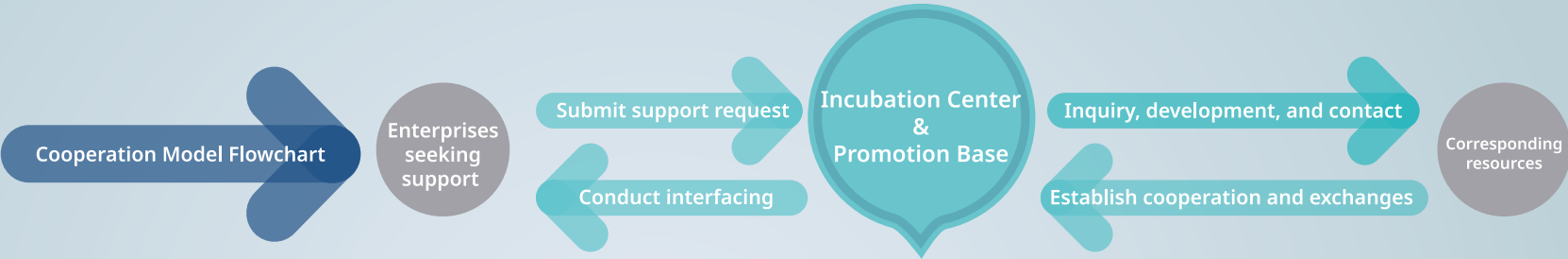
ABOUT US

To always stay aligned with the latest international industrial developments and emerging application market trends, we have been actively aligning with policies from both central and local governments, as well as cooperating with legal entity, academia, industry, and other organizations. We allocate advisory resources to supporting the semiconductor industry and tech startups to take root in Southern and Northern Taiwan.

Through the incubation centers in Southern and Northern Taiwan, we actively recruit promising semiconductors and smart electronics companies to station in the industrial park, link diverse resources from industries/governments/academia/research resources across nations to reinforce the incubation environment, inject domestic and international tech innovations to boost overall business and industry development, hasten the elimination of the upstream gap in IC design for the Taiwanese semiconductor industry, as well as stimulate the clustering benefits of semiconductor and smart electronics industries in Southern Taiwan and promote development value.



OUR RESOURCES



Introduction to Support Resources





SOUTHERN TAIWAN IC DESIGN INDUSTRY PROMOTION HUB, INDUSTRIAL DEVELOPMENT ADMINISTRATION, MINISTRY OF ECONOMIC AFFAIRS

【RECRUITMENT CRITERIA】

- 1 Independently operated enterprises (excluding branches) recognized by the Ministry of Economic Affairs;
- 2 For first-time applicants, the stationing period should be between 1 to 3 years. Application documents for extension must be submitted 3 months before the stationing period expires. Extensions are granted upon written approval, with each extension being at least 1 year. Extensions aligning with the Base's development goals may be extended for up to 2 years, subject to the total duration limits specified in the regulations.

【INCUBATION ENVIRONMENT】

Various office space types are provided according to the company's operation plan. Services include district-wide wireless network coverage, security access control systems, meeting spaces, communication exchange areas, and administrative support.

1 OFFICE SPACE



Independent spaces are available for lease as per announced rental rates, accommodating several to dozens of individuals.

2 MEETING SPACE



Equipped with meeting hardware, accommodating 5 to 30 participants.

3 COMMUNICATION EXCHANGE AREAS



An environment for comfortable communication and interaction.

4 LEISURE SPACE



With facilities for physical and mental relaxation.



【LOCATION】

- Located on Building A (1F) and Building B (1F, 5F, 6F, and 7F), Kaohsiung Software Park.
- Convenient transportation: 13-minute walk from Exit 4 of the Kaohsiung Metro R7 Shihjia Station; approximately 1-minute walk from the Kaohsiung Light Rail C7 Software Park Station.
- Search "Southern Taiwan IC Design Industry Promotion Hub, Industrial Development Administration, Ministry of Economic Affairs" on Google Maps

Past/Currently Stationing Vendors

IC design

SYNC Power Corp. | Terminus Technology Inc. | Fortune Advanced Technology Co., Ltd. | KaiKuTek. | Bravotek Electronics. | SOUNDS GREAT CO., LTD | CHIH YUE TECHNOLOGY CO., LTD | SIRIUS WIRELESS PTE. LTD. | Teletrx Co. | Jmem Tek. | Ranictek Inc. | IC ARTIS CORPORATION LIMITED. | Genesys Logic. | PixArt Imaging Inc. | NUI Technology Inc.

【RECRUITMENT CRITERIA】

- 1 Domestic (or international) natural persons with technical expertise, or unlisted companies registered in the Republic of China.
- 2 Foreign companies must register as a "subsidiary or independent company" in Taiwan under local laws and regulations.
- 3 The maximum station period is 4 years. Application documents for extension must be submitted 3 months before the station period expires. Each extension is limited to 1 year upon written approval.

【INCUBATION ENVIRONMENT】

Various types of office spaces are provided for new start-up companies at different stages of development. The entire area is equipped with fiber optic internet and wireless broadband, exclusive access control and vehicle control, 24-hour professional property management, as well as irregular patrols to safeguard intellectual property.

1 CONFERENCE ROOM



Equipped with meeting hardware, capable of accommodating more than 25 participants.

2 OFFICE SPACE



Independent spaces are available for lease as per advertised rental rates by the Northern District Office, accommodating several to dozens of individuals.

3 BUSINESS SEATS



Independent spaces are available for lease as per advertised rental rates by the Northern District Office, accommodating several to dozens of individuals.

4 INFORMATION SERVER ROOM



Includes UPS system, server fault-tolerant migration, and high-security network connections.

5 MEASUREMENT LABORATORY



Provides various measurement and experimental spaces.

6 DAILY LIFE COMMUNITIES



With financial institutions, dining options, and shopping malls.

【LOCATION】

- Located on 9F, Building H, Nangang Software Park.
- Convenient transportation with integrated access to three major transit systems (High-Speed Rail Nangang Station, Taiwan Railways Nangang Station, MRT Nangang Station/Nangang Exhibition Center Station).
- Close to National Highway No.1, National Highway No.3 (northern section) and HuanDong Boulevard.
- Search for "Nangang IC Design Incubation Center" on Google Maps.

